

**craftstone**  
manufactured stone veneer



# Craftstone Take Off Guide



**craftstone** manufactured stone veneer

# Understanding Square Metres and Lineal Metres

## M<sup>2</sup> (Square Metres)

Applies to flat area - Calculate Height x Width

## LM (Lineal Metres)

Applies to corners - Calculate the total Length of areas requiring corner pieces

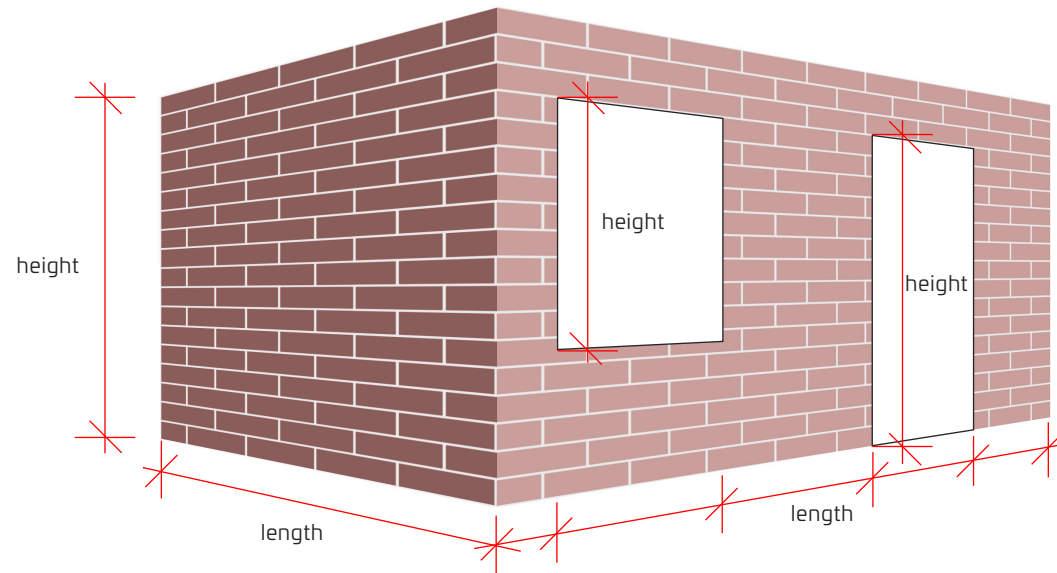
## Deductions

Deduct m<sup>2</sup> or L/m that do not require stone



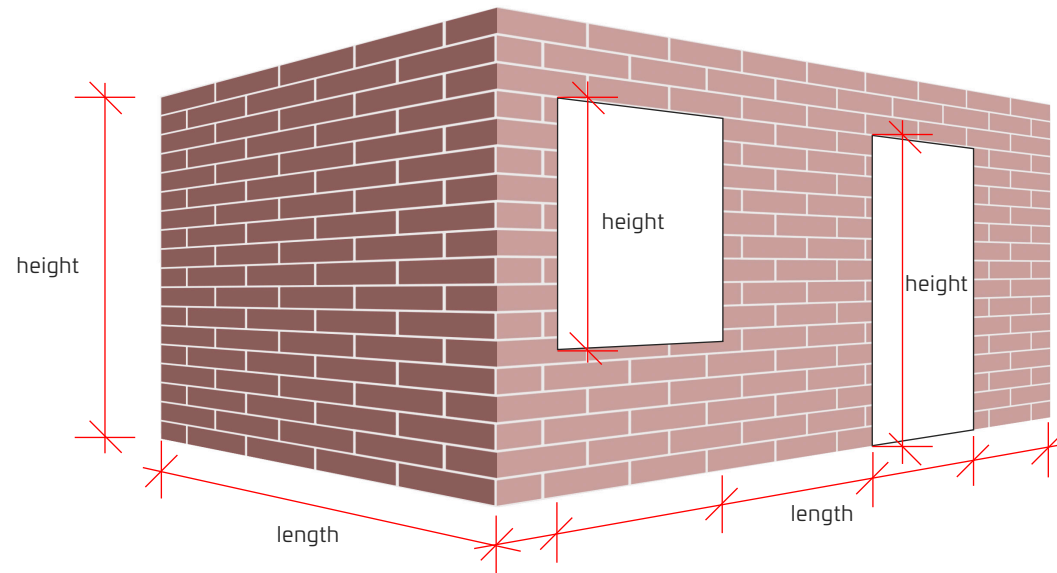
## Formula

Total Stone Required  
= (Wall area) – (area of Openings) – (area covered by corners)



## Formula

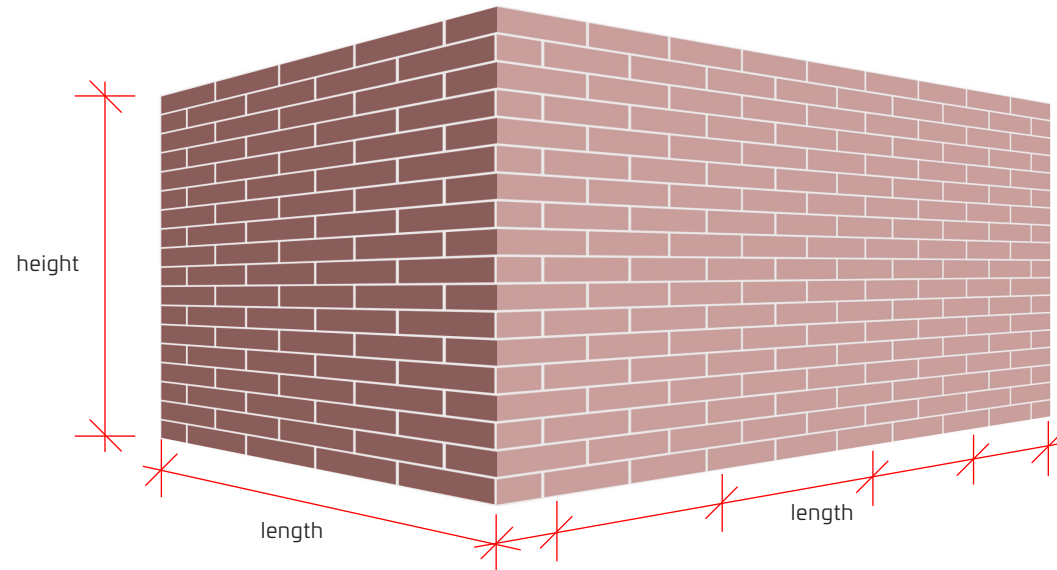
Total Stone Required  
= (Wall area) – (area of Openings) – (area covered by corners)



## Formula

Total Stone Required  
= (wall area) – (window + door area) – (wall area covered by corners)

Formula:  
Area covered by Corners = lineal metres of Corners x 0.2



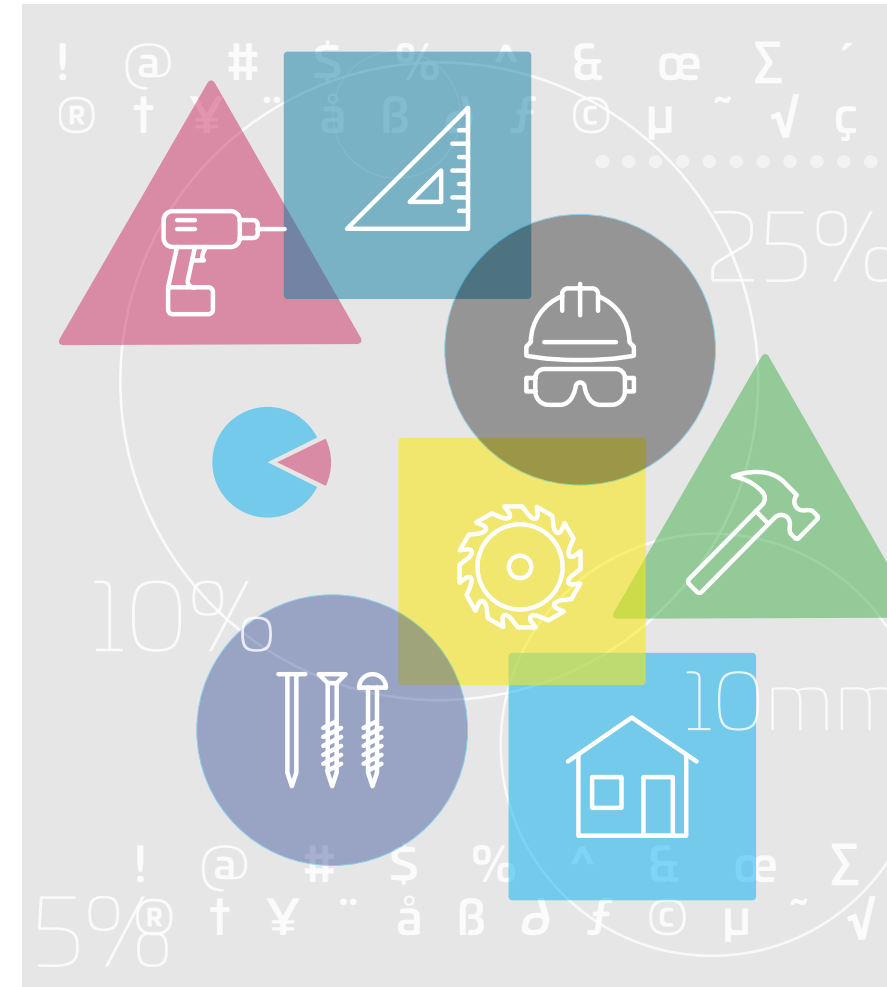
## Formula

### Why Allow 5% for Waste?

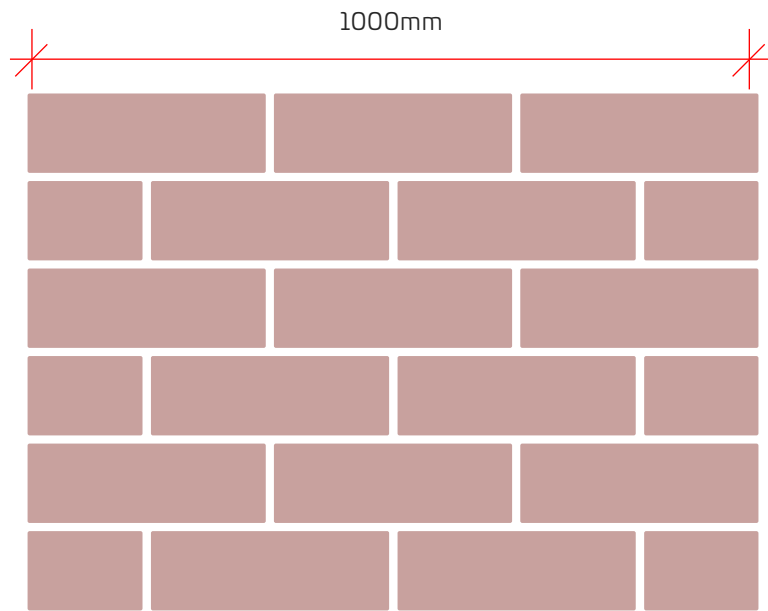
- Allows for good selection of CraftStone sizes and shapes for a professional finish
- Eliminates the risk of finishing the job with similar colour or sized pieces

### Why Allow 10-25% for Tight Fitting?

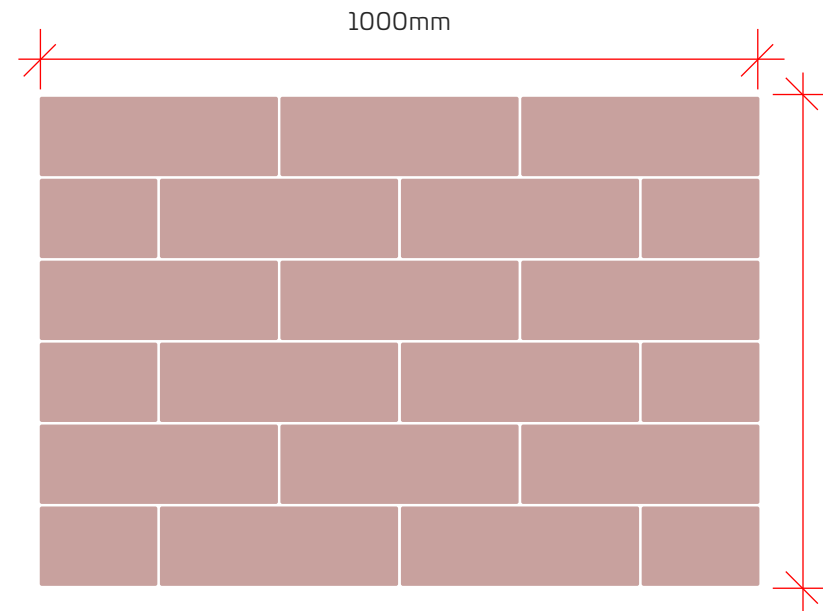
- CraftStone is sold based on using a 10mm mortar joint
- When stone is fitted with no mortar joint, it requires more stone per square metre
- Always ask customers what type of mortar joint they desire
- Standard 10mm
- Tight Fitted



## Why Allow 10-25% Extra for Tight Fitting?



Standard 10mm



Tight fitted

## Why Allow 10-25% Extra for Tight Fitting?

Profile	Standard Joint	Tight Fitted Joint
CraftBricks Cottage	5%	N/A
Vintage Ledgerstone	5%	N/A
Classic Ledgerstone	5%	N/A
Lime Stone	5%	N/A
Mountain Ledgerstone	5%	20%
Stacked Ledgerstone	5%	20%
Medieval Castle Stone	5%	N/A
SandStone	5%	N/A
River Rock	5%	N/A
Quarry Stone	5%	25%

- Allow 5% for wastage across all profiles
- Allow 10-25% for tight fitted joints – refer to table
- Always ask customers what type of mortar joint they require?

# Craftstone Take Off Guide



**craftstone** manufactured stone veneer